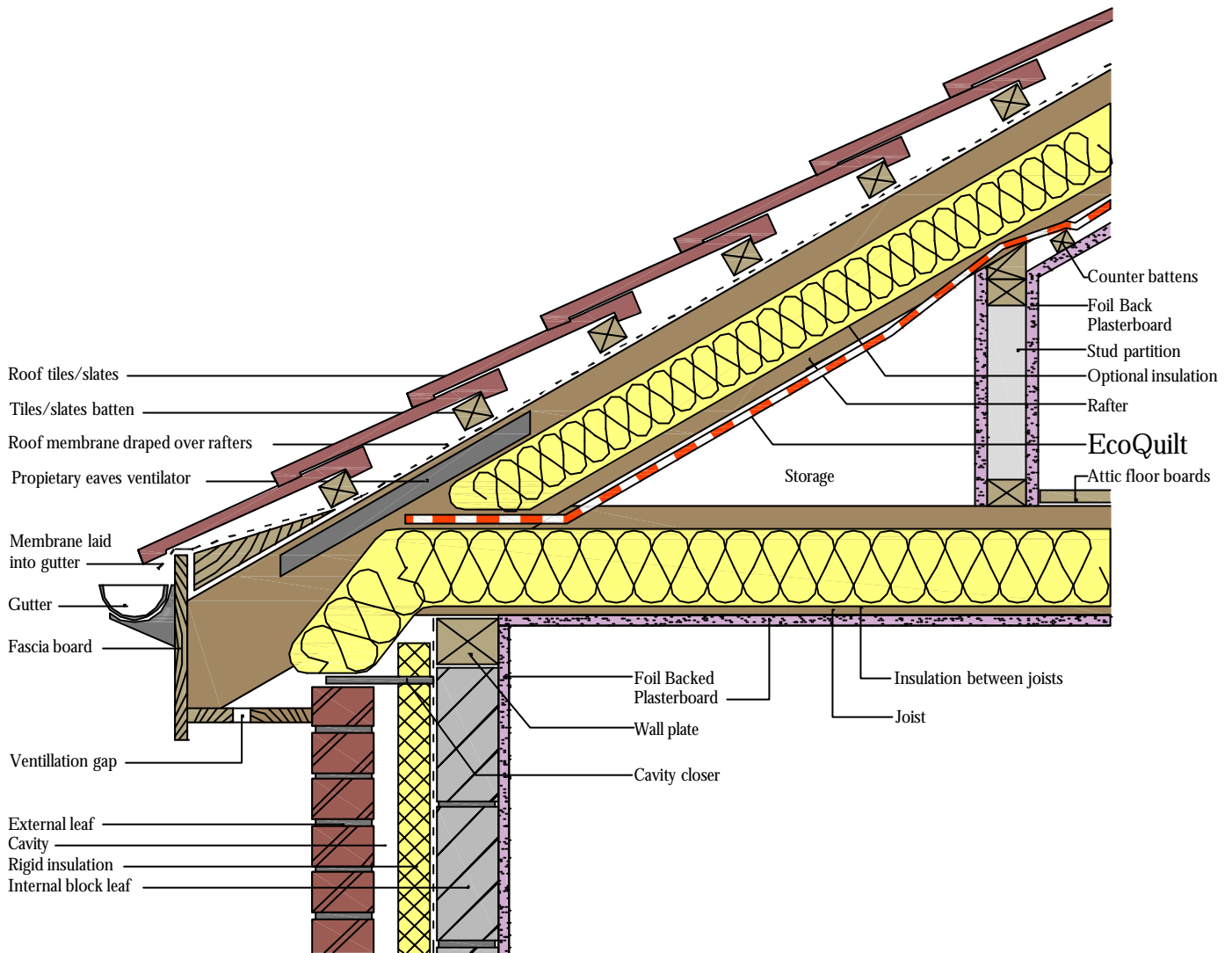


Installation Details - Attic Conversion with Storage



Attic Conversion with Storage - Eaves Detail

Installation Instructions

Fitting Instructions

To fit vertically from top to bottom
 Measure from the eaves to the apex of the roof
 Cut EcoQuilt to length plus additional 100mm
 Staple the EcoQuilt to the underside of the rafters
 Fix the next row in the same way overlapping the sealed edges
 The unique 1.2m width will ensure your joists overlap on a rafter

To fit horizontally, roll out the EcoQuilt parallel to the eaves.
 Staple the EcoQuilt to the underside of the rafters as you roll
 The next layer must overlap by at least 50 mm

Fix 14mm staples every 50mm
 Tape seal any joists or overlaps with Alutape or Silver Duct Tape
 Fold finishing edges under by 50mm and staple or secure with batten
 EcoQuilt is most effective with a 25mm air space on both sides

Additional Instructions for use in Attic Conversion

Fit as above with staples and seal all joints and edges.
 Fix counter battens (32 x 25mm min) to the rafters under the EcoQuilt
 Fix foil backed plasterboard to the battens

General Guidelines

During fitting, care must be taken to ensure the EcoQuilt is not damaged.
 Any damage should be repaired using duct or foil tape.
 Where EcoQuilt is cut to fit around openings, care must be taken to minimise gaps.
 Excess material can be trimmed with a scissors or sharp utility knife.
 Any exposed edges should be sealed with duct tape.
 We do not recommend the use of recessed lighting due to the conflict between air tightness and fire risk.
 If recessed lighting is to be used, the EcoQuilt must be cut to at least 150mm all around and special enclosures must be used around the light.
 The effectiveness of the installation is reduced in this case.
 EcoQuilt has the added benefit of shielding against radiation from various sources such as power lines, mobile phone masts, microwave antennae etc.
 However your phone signal may be adversely affected in weak signal areas

When using EcoQuilt with other additional installation, care must be taken to ensure that all air gaps are maintained in accordance with the guidelines.